

## JUNG PUMPEN PKS-B 800 POLY-SUMP

FOR SUBMERSIBLE SEWAGE PUMPS | WITH PLASTIC VALVES AND GUIDE RAIL

### APPLICATION

The buoyancy proof sump is supplied as a complete prefabricated pump station for use with pressure drainage systems and as a sewage collection sump for use with gravity sewers. It is suitable for locations with class A 15, B125 and as an option for locations to D 400. Preformed transport eyelets provide easy transport and placing into its final position

A comprehensive range of pumps from the MultiCut sewage pump series UAK/UFK 08/2M to UAK/UFK 45/2 M, with or without Ex rating together with control units which have been specially optimised for pressure sewer applications are available to ensure that the pump station meets the required discharge performance.

### DESCRIPTION

The buoyancy proof plastic sumps of high grade polyethylene are approved by the German Institute for Construction Engineering (DIBt) with inflow port DN 150, port DN 100 for power cable and venting and are provided with discharge DN 32.

The newly designed unique coupling system made of Polyphthalamide (PPA) is located above the water level. The ball type stainless steel shut off valve is provided with safety locking device. The coupling valve can only be opened after the shut off valve is closed. A stainless steel chain and a guide tube facilitate the lifting of the pump or the coupling of the pump to the discharge outlet. Depending on the extension used it is possible to extend the sump to a total height of 2.90 metres. The type of loading class possible depends on the site location. The total volume of the PKS-B 800 is 640 litres. The storage volume to the lower edge of the inlet port is 145 litres and the residual volume is only 35 litres.

- Mark of conformity  
Z-42.1-331 (PKS-A)  
Z-42.1-431 (PKS-B)
- Suitable for traffic to class B 125
- Corrosion resistant components
- Inlet designed for optimised flow and smooth benched deposit free collection chamber
- Coupling system with guide tube
- Ball type non return valve and pump together with guide tube can be lifted out of sump
- Residual volume from 35 litres

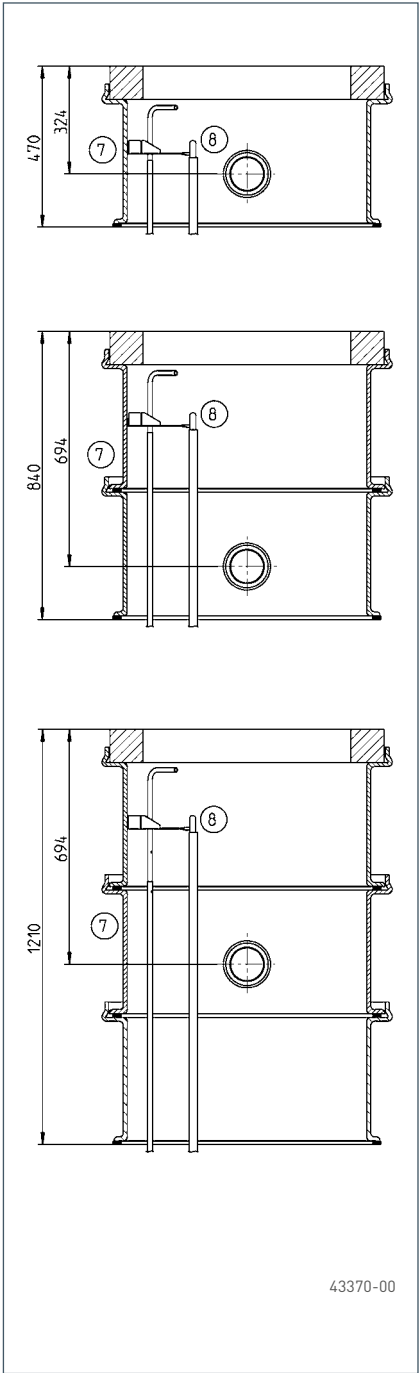
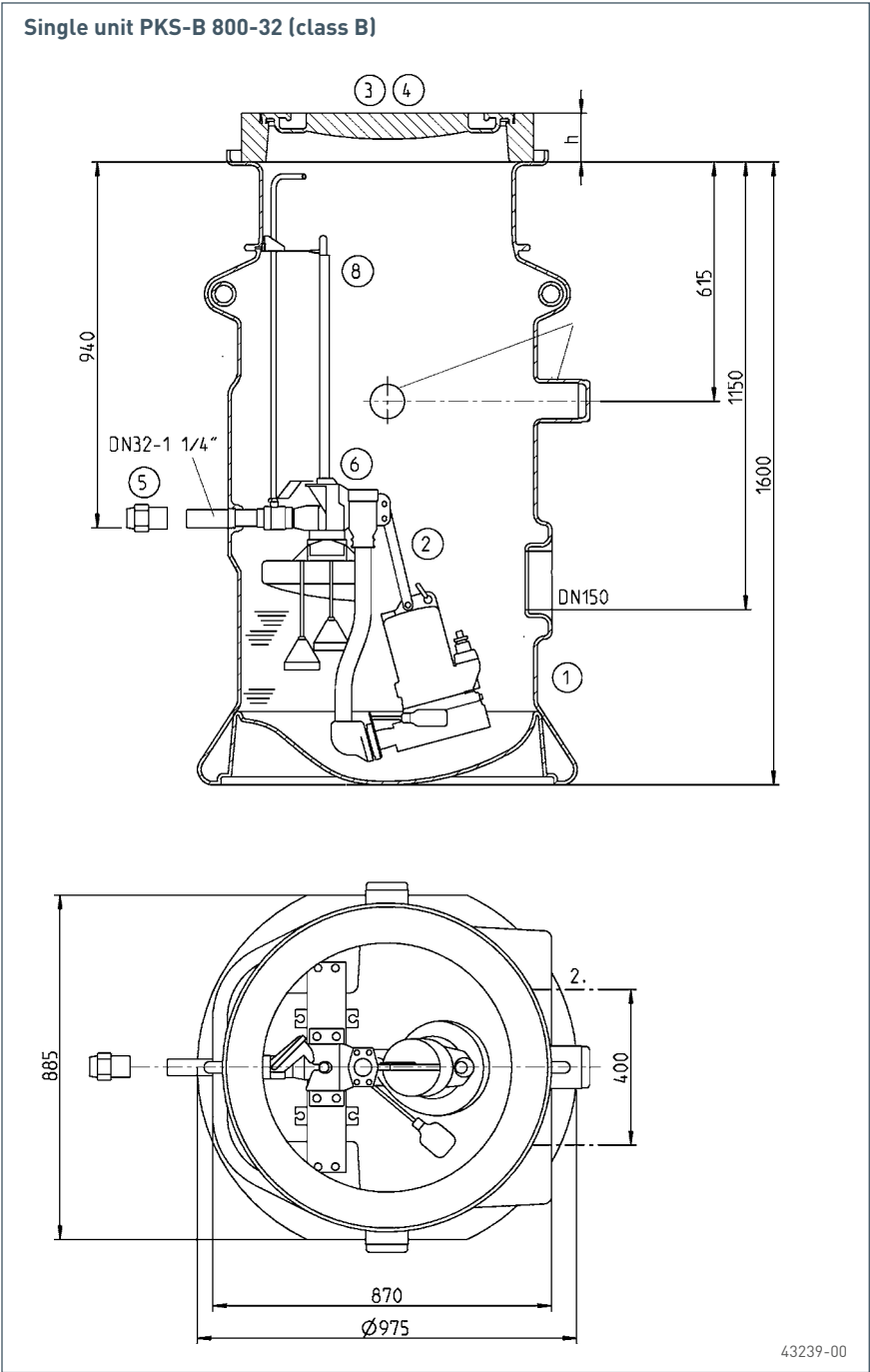


PKS-B 800-32

# JUNG PUMPEN    PKS-B 800

## POLY-SUMP

FOR MULTICUT PUMPS



Dimensions (without cover) mm	Height	Inlet	Pressure outlet	Buoyancy proof depth
Sump	1600	1150	940	1600
Sump + PSV-B 800-470	2070	1620	1410	1600
Sump + PSV-B 800-840	2440	1990	1780	1600
Sump + PSV-B 800-1210	2810	2360	2150	1600

Volume	Sump	Extension	Switching point			
		Concrete ring and PSV-B	Off	On	Alarm / peak load	Lower edge of inlet point
PKS-B 800-32	640 l	per Ring 155 l	36 l	110 l	145 l	145 l

# JUNG PUMPEN PKS-B 800

## POLY-SUMP

FOR MULTICUT PUMPS

### SCOPE OF SUPPLY

#### PKS-B 800-32 (Single unit)

Plastic sump, coupling system and guide tube. Stainless steel ball type shut off valve with extension and security locking. Stainless steel discharge DN 32 with external thread 1 1/4", two sleeves DN 150 for the inlet (one ready for connection) together with three ports DN 100 for power cable or venting.

#### Sump extension (PSV-B for PKS-B)

Sump extension, telescopic extension to operate the ball type shut off valve, guide tube extension with stainless steel bracket, concrete ring, seal for neck of sump and opening DN 100 with seal for power cable or vent pipe.

### ACCESSORIES

Description		Code No.	Weight (kg)
① Poly-sump Second inlet	PKS-B 800-32	JP09475	78
	with sealing element DN 150	JP42181	
② Discharge pipe assembly-32	20/2M plus to 45/2M	JP44855	8
	08/2M, Ex	JP44856	8
	08/2M	JP44857	8
③ Cover system "Göbel" without ventilation Lifting device for concrete cover system "Göbel" Concrete cover without ventilation Ventilation pipe Insulation set (anti-freeze protection)	Ø 600 Kl. A 15, h= 80	JP44971	90
		JP44969	
	Ø 610 Kl. B 125, h= 125	JP44972	110
	DN 100, stainless steel	JP44858	
		JP24412	3
④ Concrete ring	625 x 100 mm, Ø 825 (only with PSV-B)	JP44974	55
	625 x 100 mm, Ø 785	JP44975	32
⑤ Single ended quick release coupling with female thread and clamp 1 1/4" to Ø 40 mm (DN 32) 1 1/4" to Ø 50 mm (DN 40) 1 1/4" to Ø 63 mm (DN 50)		JP44796	
		JP44797	
		JP44798	
⑥ DRS-connection 1/2" with cover Breathing valve with cover DRS-connection + Breathing valve with cover		JP42178	
	Further accessories on request.	JP42179	
		JP42180	
⑦ Sump extension   Additional inlet	PSV-B 800 x 470 with DN 100	JP43119	78
	PSV-B 800 x 840 with DN 100	JP42894	96
	PSV-B 800 x 1210 with DN 100	JP43193	117
	with sealing element DN 100	JP43382	
⑧ Telescopic operating handle with chain and shackle		JP42197	

### PUMPTYPES FOR PKS-B 800-32

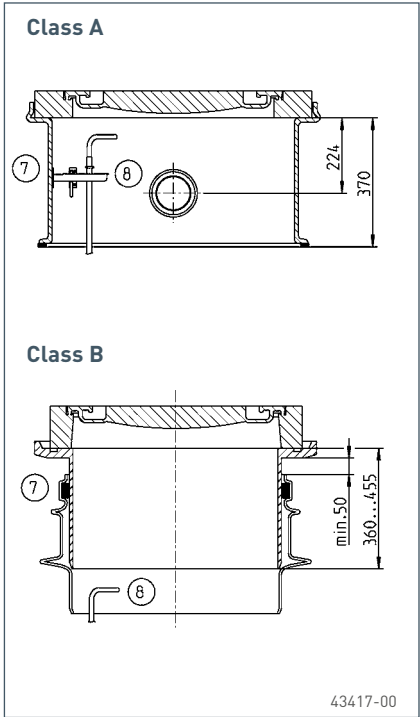
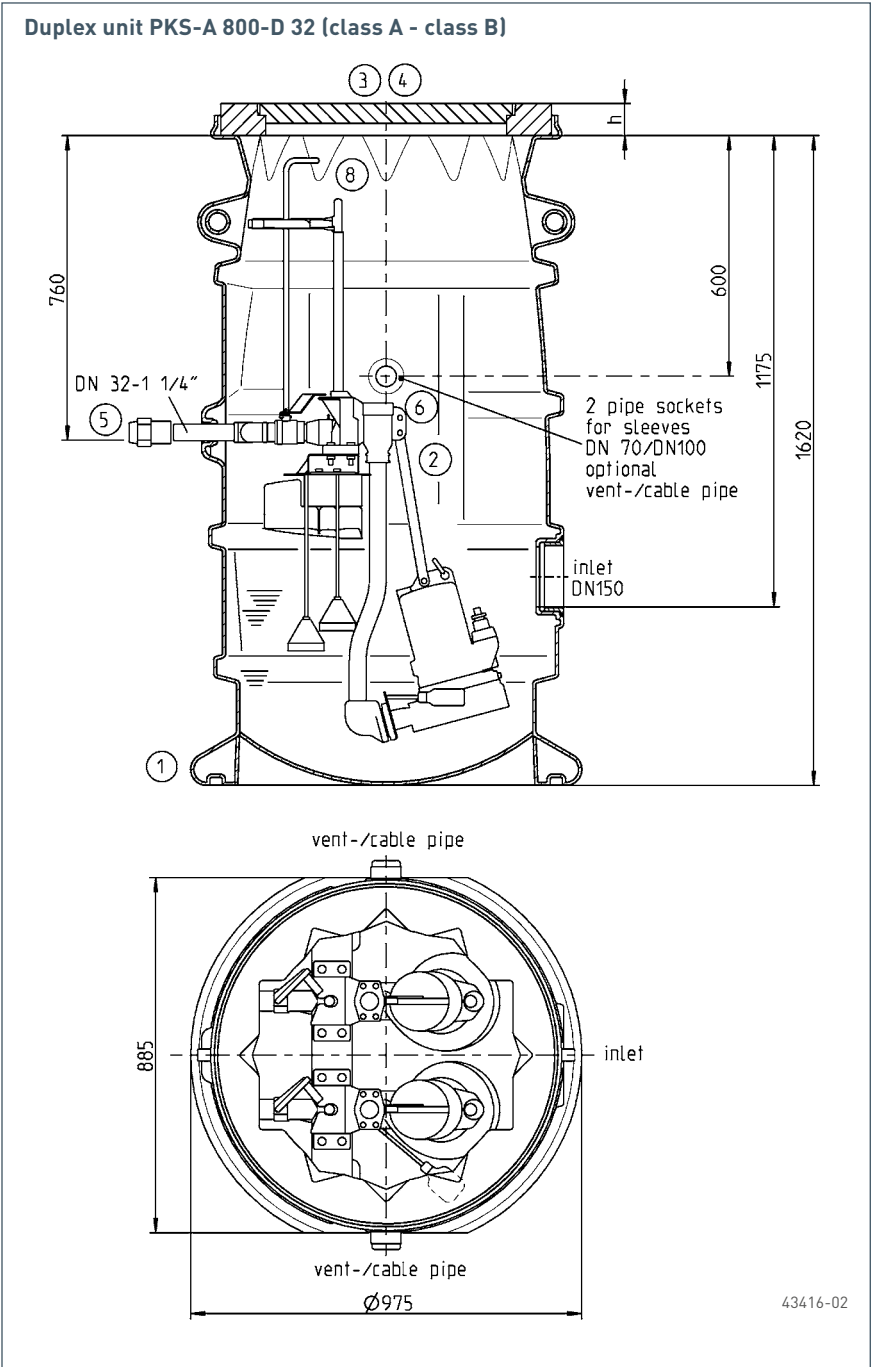
#### MultiCut-Pumps:

08/2 M, 08/2 ME, 20/2 M plus, 25/2 ME, 35/2 M, 36/2 M, 45/2 M

# JUNG PUMPEN    PKS-A 800

## POLY-SUMP

FOR MULTICUT PUMPS



Dimensions (without cover) mm	Height	Inlet	Pressure outlet	Buoyancy proof depth
Sump	1620	1175	760	1620
Sump + 3 concrete rings	1920	1475	1060	1000
Sump + PSV-A 800-370	1990	1545	1130	1000
Sump + PSV-A 800-455	1980–2075	1535–1630	1120–1215	1000

Volume	Sump	Extension		Switching point			
		PSV-A	PSV-B and concrete ring per 100 mm	Off	On	Alarm / peak load	Lower edge of inlet point
PKS-A 800-D 32	750 l	155 l	30 l	80 l	130 l	150 l	150 l

# JUNG PUMPEN PKS-A 800

## POLY-SUMP

FOR MULTICUT PUMPS

### SCOPE OF SUPPLY

#### PKS-A 800-D32 (Duplex unit)

Plastic sump, 2 coupling systems and guide tube, 2 stainless steel ball type shut off valve with extension and security locking. Stainless steel discharge DN 32 with external thread 1 1/4", one sleeve DN 150 for the inlet, two ports DN 100 for power cable or venting.

#### Sump extension

##### (PSV-A/PSV-B for PKS-A)

Sump extension with seal and set of fasteners.

### ACCESSORIES

Description		Code No.	Weight (kg)
<b>1 Poly-sump</b>	PKS-A 800-D32	<b>JP09497</b>	81
<b>2 Discharge pipe assembly-32</b> (2 pcs. necessary)	20/2M plus to 45/2M	<b>JP42227</b>	8
	08/2M, Ex	<b>JP42228</b>	8
	08/2M	<b>JP42229</b>	8
<b>3 Cover system "Göbel" without ventilation</b>	Ø 600, cl. A 15, h=80	<b>JP44852</b>	90
<b>Lifting device</b> for concrete cover system "Göbel"		<b>JP44969</b>	1
<b>Concrete cover</b> without ventilation	Ø 610 cl. B 125, h=125	<b>JP44972</b>	110
<b>Insulation set</b> (anti-freeze protection)		<b>JP24412</b>	3
<b>Ventilation pipe</b>	DN 100, stainless steel	<b>JP44858</b>	4
<b>4 Concrete ring</b>	625 x 100 mm, Ø 825	<b>JP44974</b>	55
<b>5 Single ended quick release coupling</b> with female thread and clamp			
1 1/4" to Ø 40 mm (DN 32)		<b>JP44796</b>	1
1 1/4" to Ø 50 mm (DN 40)		<b>JP44797</b>	1
1 1/4" to Ø 63 mm (DN 50)		<b>JP44798</b>	1
<b>6 DRS-connection 1/2" with cover</b>		<b>JP42178</b>	
<b>Breathing valve with cover</b>	Further accessories on request.	<b>JP42179</b>	
<b>DRS-connection + Breathing valve with cover</b>		<b>JP42180</b>	
<b>7 Sump extension</b>	PSV-A 800 x 370 with DN 100	<b>JP43121</b>	25
	PSV-B 800 x 455 (adjustable from 360 to 455 mm)	<b>JP42132</b>	13
<b>8 Telescopic operating handle</b> with chain and shackle		<b>JP42197</b>	

\* only applicable in connection with sump extension PSV-B 800x455

### PUMPTYPES FOR PKS-A 800-D32

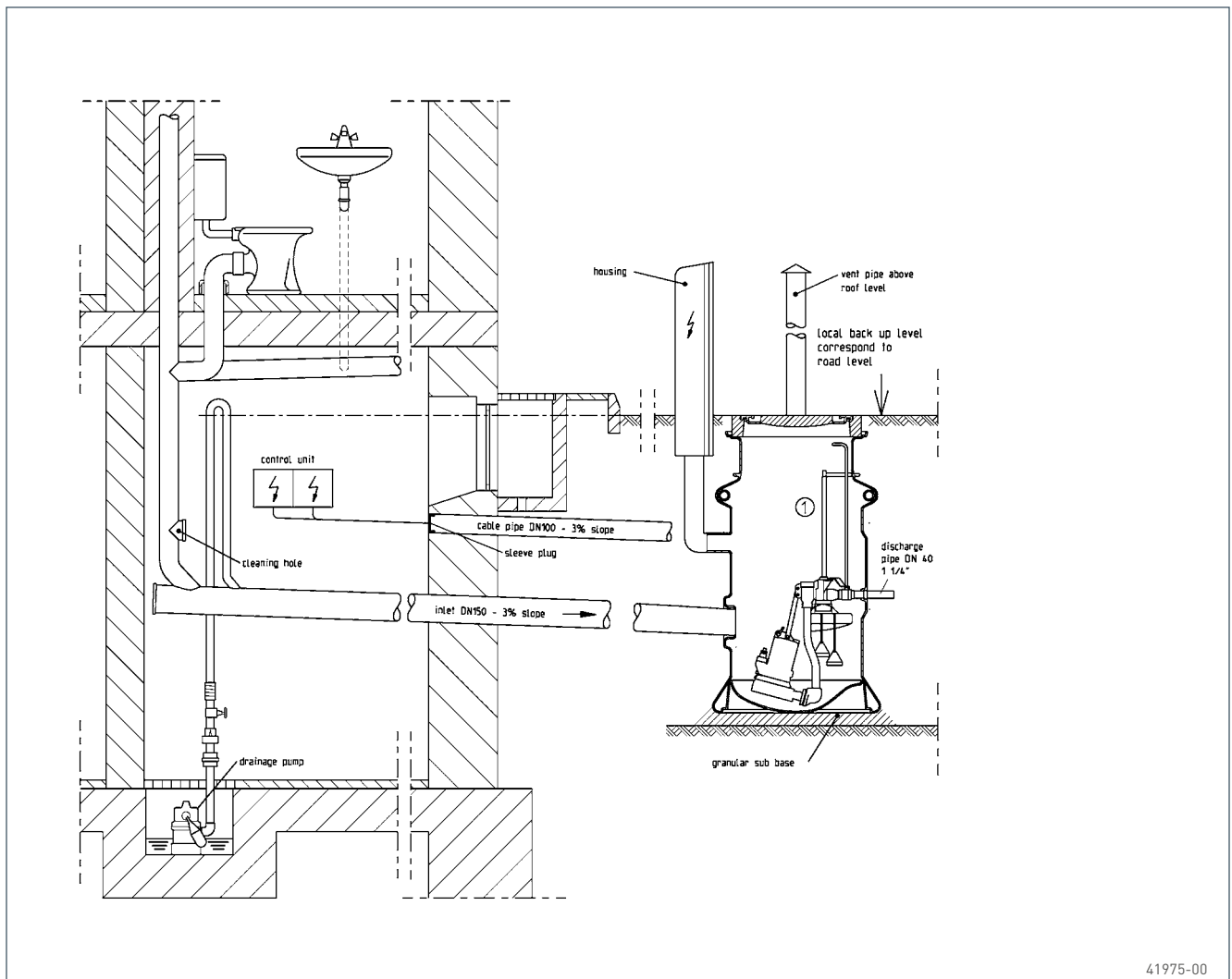
#### MultiCut-Pumps:

08/2 M, 08/2 ME, 20/2 M plus, 25/2 ME, 35/2 M, 36/2 M, 45/2 M

# JUNG PUMPEN PKS-B 800

## POLY-SUMP

FOR MULTICUT PUMPS



41975-00

### INSTALLATION CHARACTERISTICS

The PKS-Sump complies with all the requirements of standards DIN EN 12056/752/476 and is supplied ready for installation and connecting up. It's low weight facilitates transport and installation. It can be installed and connected in a short time without the need for expensive construction machinery.

Subject to compliance with the "hints and operating requirements of standard DIN 476" the height levels can be easily adjusted using industry standard support rings to DIN 4034 T1 or by using the sump extensions PSV.

Checking and maintenance work on the valves can be easily carried out from above – without the need to enter the sump.

Important functional features have also been taken into consideration when designing the PKS sump: a smooth benched collection chamber without any septic zones, inflows DN 150 orientated in the flow direction and a pressure tight discharge connection which is water tight resistant to any longitudinal stresses.