

JUNG PUMPEN PKS-D 1000 POLY-SUMPS

PKS-D 1000 FOR MULTICUT PUMPS

APPLICATION

The buoyancy proof and practicable plastic sump in high-grade polypropylene (PP) is approved by the German Institute for Construction Engineering (Reg.-N° Z-42.1-410). It is used in pressure drainage systems as well as a standard pump sump. It is suitable for use in areas with traffic load up to 40 tons. (DIN EN 124, group 4). The PKS-D can be placed on natural ground without concrete works. The modular design offers easy transport and installation.

In order to adjust the pumping stations to the required pumping conditions a wide range of MultiCut submersible sewage pumps is available, both with or without explosion protection.

The sump is available in two versions, with a ladder (SG) using pumps MultiCut 20/2 M to 45/2 M and without a ladder using the larger MultiCut types 75/2 M and 76/2 M. Both versions have a connection piece for inlet, two sockets with seal for ventilation and cable duct, a facility for installing a flushing connection and a DN 40 pressure outlet.

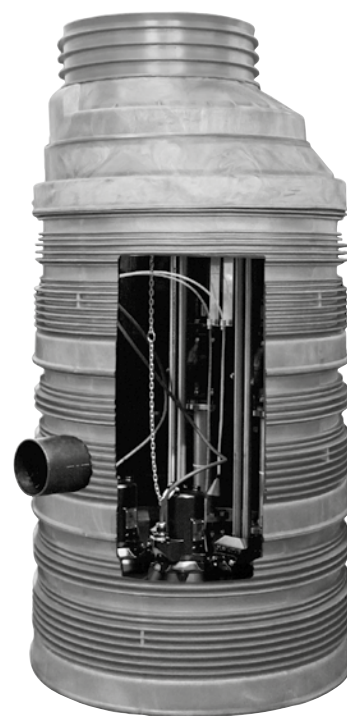
The standard installation depth without a cover is 2.27 m. The installation depth can be extended to 5.90 m by the use of sump extensions (installation depth in ground water not more than 4 m). The total volume is 1372 litres. The volume storage below the inlet is 396 litres.

If extensions are used, one of the extensions must be ordered with a tie-bar.

AVAILABLE PUMP TYPES

MultiCut pumps

20/2 M plus, 25/2 ME, 35/2 M, 36/2 M, 45/2 M, 75/2 M and 76/2 M



PKS-D 1000-D40

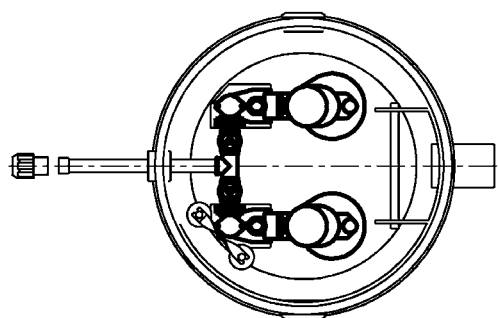
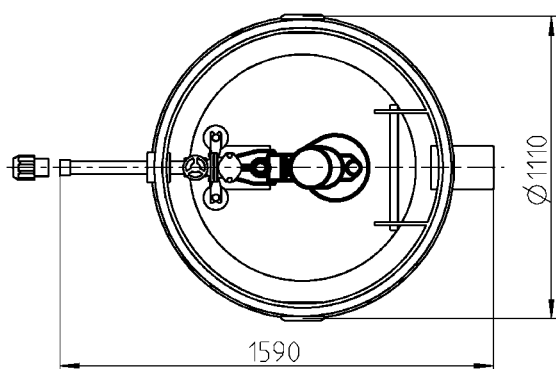
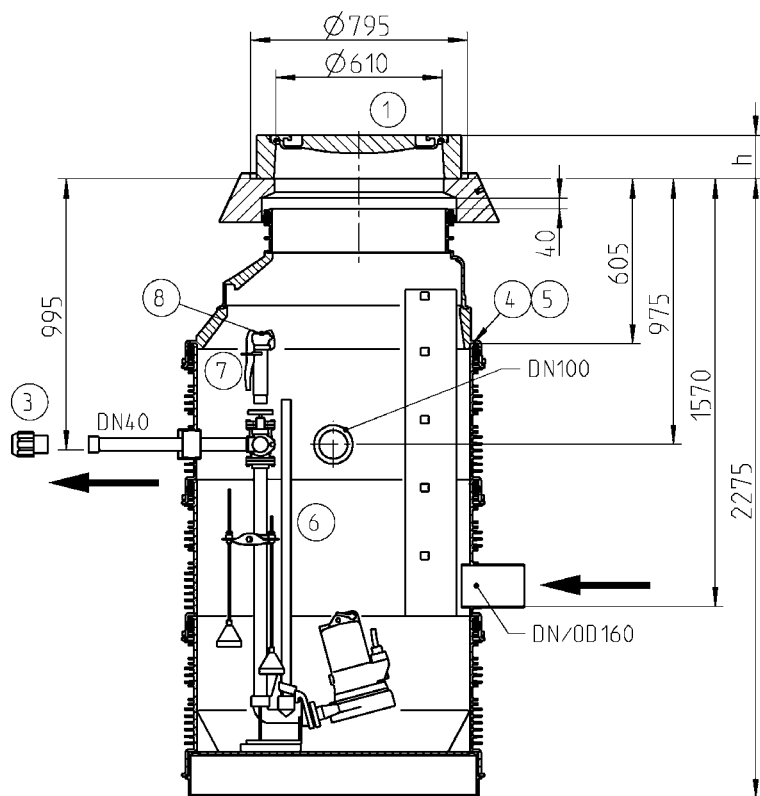
- Mark of conformity Z-42.1-410
- Suitable for traffic up to class D 400
- Corrosion-proof
- Buoyancy-proof and ground water proof
- Max. installation depth 5.90 m

JUNG PUMPEN PKS-D 1000

POLY-SUMPS

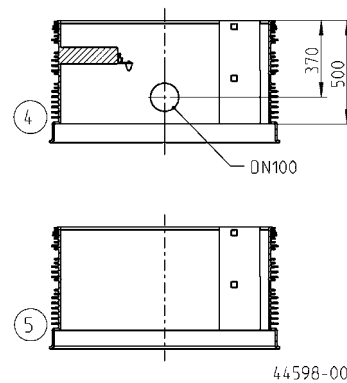
PKS-D 1000 FOR MULTICUT PUMPS

PKS-D 1000-40 and -D40

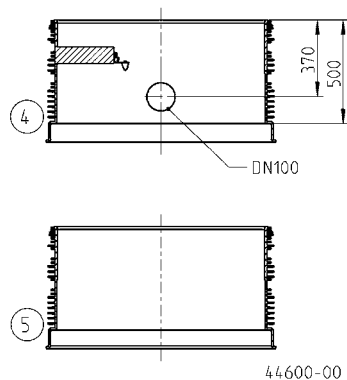


44597-00

with ladder



without ladder



We reserve the right to change specifications without notice. illustration with ladder

JUNG PUMPEN PKS-D 1000

POLY-SUMPS

PKS-D 1000 FOR MULTICUT PUMPS

SCOPE OF SUPPLY

PKS-D 1000-40 (single unit)

The poly-sump consist of an underpart with an inlet and a discharge branch, an extension element, a cone 1000/625 and a concrete support ring for the manhole cover (accessory). The segments are sealed with sealing rings.

Inlet socket DN/OD 160 (DN 150) for PVC collar (KGU), 2 sockets DN 100 for ventilation/cable duct, 1 socket plug DN 100, guide rail system, pipework with elbow ball check valve and stop valve in

DN 40 in stainless steel, facility for flushing connection system "Perrot".

PKS-D 1000-D40 (duplex unit)

The poly-sump consist of an underpart with an inlet and a discharge branch, an extension element, a cone 1000/625 and a concrete support ring for the manhole cover (accessory). The segments are sealed with sealing rings.

Inlet socket DN/OD 160 (DN 150) for PVC collar (KGU), 2 sockets DN 100 for ventilation/cable duct, 1 socket plug DN 100, 2 guide rail systems, pipework with elbow ball check valves and stop valves in DN 40 in stainless steel, facility for flushing connection system "Perrot".

SUMPS

Type	Code no.	Weight
Poly-sump PKS-D 1000-40	JP44358	280 kg
Poly-sump PKS-D 1000-D40	JP44359	300 kg
Poly-sump PKS-D 1000-D40 (75) without ladder	JP44361	300 kg

ACCESSORIES

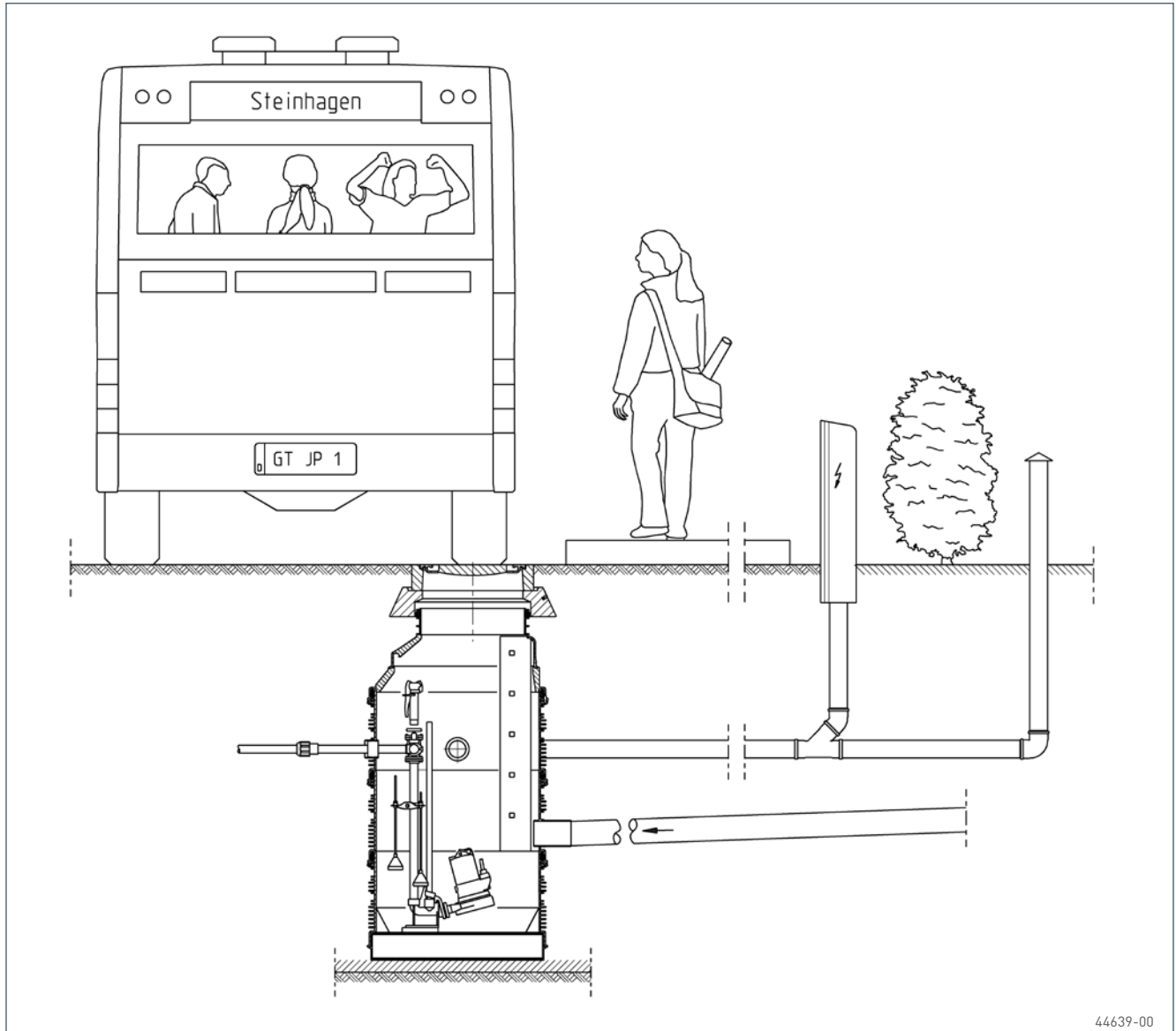
Description	Code no.	Weight
① Cover without ventilation, class B d610 h=125	JP44972	110,0 kg
Cover without ventilation, class D d610 h=160	JP29175	190,0 kg
② Access aid, grab handle	JP44610	4,0 kg
Access aid, sleeve	JP44611	1,5 kg
③ Screw joint 1 1/2" - 50mm with female thread and clamping connection	JP22366	0,3 kg
Screw joint 1 1/2" - 63mm with female thread and clamping connection	JP22367	0,4 kg
④ PSV-D 1000x500 SG T (10) Tie-bar, ladder	JP44407	34,0 kg
PSV-D 1000x500 T (10) Tie-bar	JP44408	32,0 kg
⑤ PSV-D 1000x500 SG (10) Ladder	JP44403	16,6 kg
PSV-D 1000x500 (10)	JP44404	15,6 kg
⑥ Guide tube 1" stainless steel 1m	JP28346	2,5 kg
Sump depth in m	2.27 2.77 3.27 3.77 4.27 4.77 5.27 5.77	
Required guide tube length in m	1.15 1.65 2.15 2.65 3.15 3.65 4.15 4.65	
Attention! For duplex units, two guide tubes are necessary.		
⑦ Fire hose coupling size C 1 1/2" KE Galvanised	JP23717	1,2 kg
Perrot flushing connection KE 250 Galvanised	JP23097	2,0 kg
⑧ Perrot hose connection Ø 50 mm	JP19202	0,4 kg
Perrot DRS connection	JP22421	0,5 kg
Perrot breathing valve	JP22422	0,6 kg
Perrot pressure gauge	JP44854	1,4 kg
Perrot claw coupling	JP22420	0,5 kg
Perrot flush connector R 1"	JP22466	0,3 kg
⑨ Ventilation pipe DN 100 Stainless steel	JP44858	4,3 kg
⑩ Second or changed inlet DN 150	JP44523	
Second or changed inlet DN 200	JP44524	
Second or changed inlet DN 250	JP44525	
⑪ Seal lubricant 1 kg tube	JP44605	1,0 kg
Seal lubricant 3 kg bucket	JP44606	3,0 kg
⑫ Dislocate of gravity center for 75/2 M and 76/2 M per pump	JP44757	

JUNG PUMPEN PKS-D 1000

POLY-SUMPS

PKS-D 1000 FOR MULTICUT PUMPS

INSTALLATION EXAMPLE



Attention: Concerning space capacity the installation of submersible switches is not possible.